

Ambient Air and Sound

Monthly Report

**STONEY TRAIL AGGREGATE RESOURCE**

---

**BURNCO**

**LAFARGE**



**Volker Stevin**  
Contracting Ltd.

**Heidelberg**  
Materials

November 2024

# Glossary

- L<sub>eq</sub>** - Equivalent Continuous Sound Pressure Level. The total sound energy logged over the course of a measurement. (Uses logarithmic averaging).
- L<sub>eq24</sub>** - Measured over the entire 24-period (00:00 – 23:59)
- L<sub>eqDay</sub>** - Measured over the daytime period (07:00 – 22:00)
- L<sub>eqNight</sub>** - Measured over the nighttime period (22:00 – 07:00)
- SPL (dBA)** - Sound Pressure Level in dBA (A-weighted, which is corrected for human hearing)
- TSP** - Total Suspended Particulate Matter. Includes particulates with a diameter of greater than 10 micrometers and smaller.
- PM<sub>2.5</sub>** - Particulate Matter with a diameter of 2.5 micrometers and smaller.

## 1.0 SOUND LEVEL MEASUREMENT RESULTS

The results of the sound monitoring at the STAR Pit can be found in Table 1. Table 1 provides the daily averaged  $L_{eq24}$ ,  $L_{eqDay}$  and  $L_{eqNight}$  sound levels in addition to the minimum and maximum  $L_{eq24}$  values.

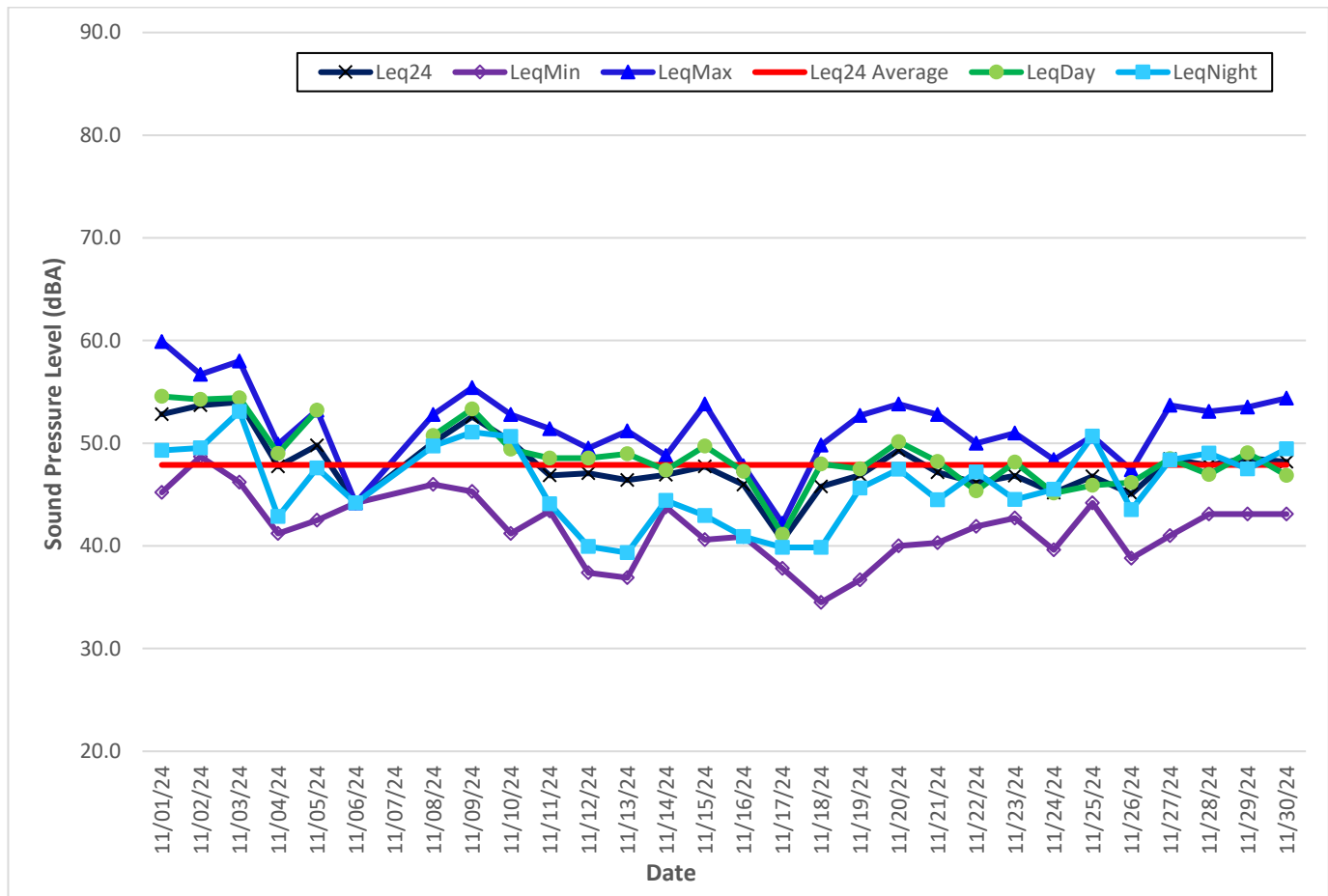
**Table 1. November 2024 – STAR PIT – Sound Monitoring Results<sup>1</sup>**

Day	Leq24	L <sub>eq</sub> Min	L <sub>eq</sub> Max	LeqDay	LeqNight
Friday 01-Nov-24	52.8	45.2	59.9	54.6	49.3
Saturday 02-Nov-24	53.7	48.7	56.7	54.3	49.5
Sunday 03-Nov-24	54.0	46.2	58.0	54.4	53.1
Monday 04-Nov-24	47.7	41.2	49.9	49.0	42.9
Tuesday 05-Nov-24	49.8	42.5	53.2	53.2	47.6
Wednesday 06-Nov-24	44.2	44.2	44.2		44.2
Thursday 07-Nov-24	High Winds				
Friday 08-Nov-24	50.1	46.0	52.8	50.7	49.7
Saturday 09-Nov-24	52.6	45.3	55.4	53.3	51.1
Sunday 10-Nov-24	50.2	41.2	52.8	49.4	50.7
Monday 11-Nov-24	46.9	43.4	51.4	48.5	44.1
Tuesday 12-Nov-24	47.1	37.4	49.5	48.6	39.9
Wednesday 13-Nov-24	46.4	36.9	51.2	49.0	39.3
Thursday 14-Nov-24	46.9	43.8	48.8	47.4	44.4
Friday 15-Nov-24	47.8	40.6	53.8	49.7	42.9
Saturday 16-Nov-24	46.0	40.9	47.8	47.2	40.9
Sunday 17-Nov-24	40.5	37.8	42.2	41.1	39.8
Monday 18-Nov-24	45.8	34.5	49.8	48.0	39.9
Tuesday 19-Nov-24	46.9	36.7	52.7	47.5	45.6
Wednesday 20-Nov-24	49.3	40.0	53.8	50.2	47.5
Thursday 21-Nov-24	47.2	40.3	52.8	48.2	44.5
Friday 22-Nov-24	46.1	41.9	50.0	45.4	47.2
Saturday 23-Nov-24	46.8	42.7	51.0	48.2	44.5
Sunday 24-Nov-24	45.2	39.6	48.4	45.1	45.5
Monday 25-Nov-24	46.8	44.2	50.7	45.9	50.7
Tuesday 26-Nov-24	45.0	38.8	47.4	46.2	43.5
Wednesday 27-Nov-24	48.5	41.0	53.7	48.5	48.4
Thursday 28-Nov-24	47.9	43.1	53.1	46.9	49.0
Friday 29-Nov-24	48.5	43.1	53.5	49.1	47.5
Saturday 30-Nov-24	48.2	43.1	54.4	46.9	49.4
Monthly Average	47.9	41.7	51.7	48.8	46.0
Monthly Maximum	54.0	48.7	59.9	54.6	53.1
Monthly Minimum	40.5	34.5	42.2	41.1	39.3

<sup>1</sup> It should be noted that all measured sound levels provided in Table 1 are for instances in which the wind speeds were below 11 km/hr and rainfall was below 3mm/hr, as both conditions will impact the validity of the measured results. As such, it is possible that there will time periods/days in which there is no valid data.

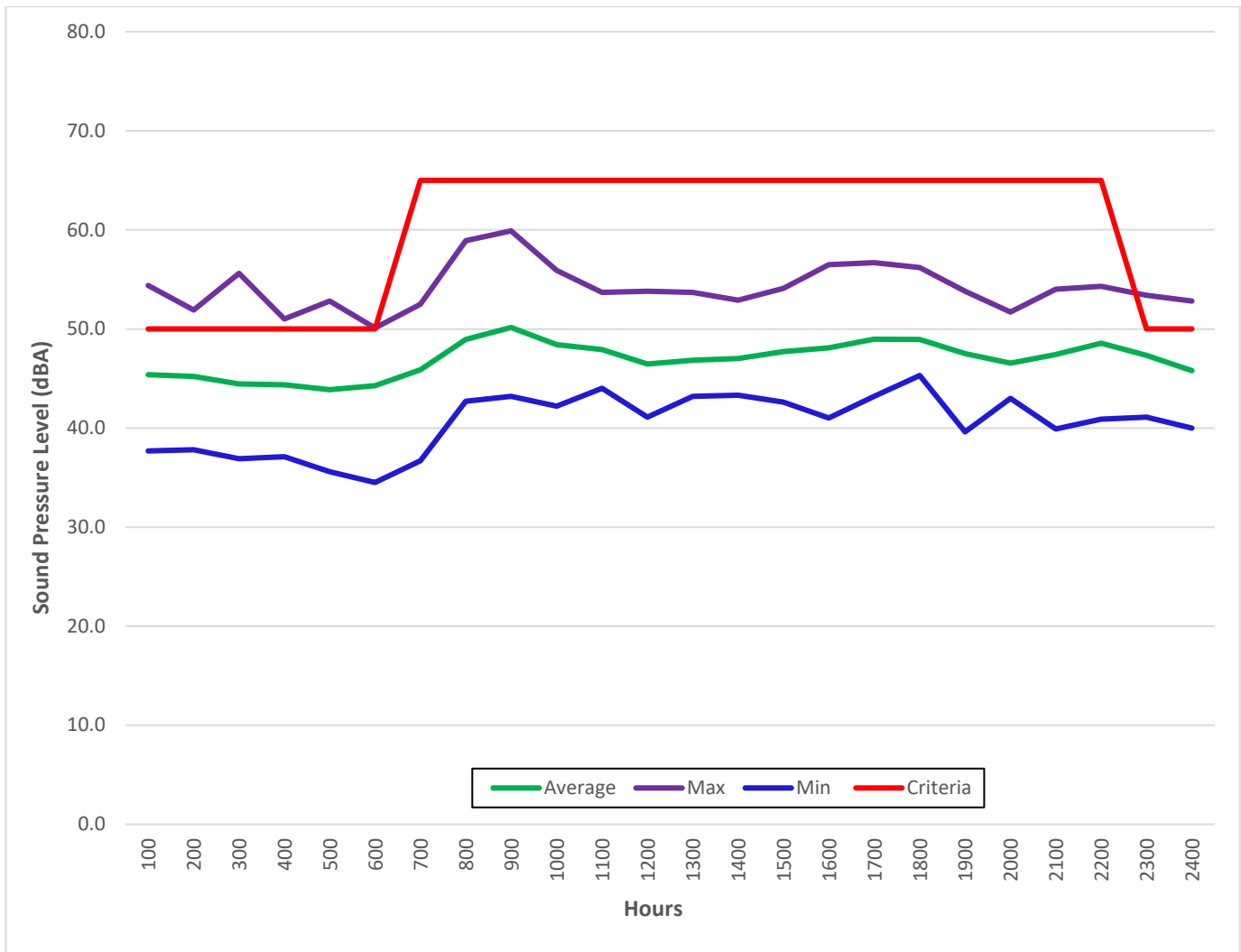
Figure 1 provides the graphical representation of the results found in Table 1. Figure 2 illustrates the hourly average, maximum and minimum  $L_{eq}$  dBA values for the entire month. In addition, the City of Calgary’s Community Standards Bylaw values have been included.

It is important to note that the monitoring stations are located inside the perimeter berms, adjacent to operations and not beyond the site boundaries. Measurements are intended to help monitor and measure the internal operations performance and are not representative of the lower offsite levels.



**Figure 1. STAR PIT – November 2024 – Daily Sound Monitoring Results<sup>2</sup>**

<sup>2</sup> Values of 30 were given to dates in which there was no data. This was to allow for the creation of the graph. The values within Table 1 are correctly calculated ignoring the dates of no data (due to wind or rain).



**Figure 2. STAR PIT – November 2024 – Hourly Sound Monitoring Summary**

## 2.0 SOUND LEVEL EXCEEDANCES

As per the development permit, the permissible sound level for this site is 50 dBA  $L_{eq-1\text{Hour}}$  for the nighttime and 65 dBA  $L_{eq-1\text{Hour}}$  for the daytime hours. As shown in Table 2, from November 1 to November 30, 2024, there were 24 exceedances. All exceedances occurred during the nighttime.

**Table 2. STAR PIT – November 2024 – Sound Level Exceedances**

Date	$L_{eq-1\text{hour}}$ (dBA)	Wind Speed (Km/hr)	Temperature (°C)	Wind Direction	Hourly Rainfall (mm)	Day/Night
Nov-01-2024 04:00	52.8	7.9	-7.1	South-West	0.00	Night
Nov-02-2024 22:00	50.1	5.8	-3.7	North-West	0.00	Night
Nov-03-2024 01:00	51.9	3.2	-6.0	North-West	0.00	Night
Nov-03-2024 02:00	55.6	7.6	-3.0	West	0.00	Night
Nov-05-2024 22:00	51.0	9.2	-3.5	West	0.00	Night
Nov-08-2024 22:00	50.1	4.9	11.3	North-West	0.00	Night
Nov-08-2024 23:00	52.8	3.1	10.6	North	0.00	Night
Nov-09-2024 22:00	53.4	8.0	-0.5	North	0.00	Night
Nov-09-2024 23:00	52.3	8.0	-0.5	North	0.00	Night
Nov-10-2024 00:00	52.8	9.4	-0.3	North	0.00	Night
Nov-10-2024 01:00	50.1	5.0	-0.7	North	0.00	Night
Nov-10-2024 02:00	50.4	8.6	-0.6	North-West	0.00	Night
Nov-10-2024 03:00	50.9	10.5	-0.5	North-West	0.00	Night
Nov-19-2024 22:00	51.2	10.4	-9.5	North	0.00	Night
Nov-19-2024 23:00	51.9	10.4	-9.8	North	0.00	Night
Nov-25-2024 22:00	50.7	10.6	-14.2	South-West	0.00	Night
Nov-27-2024 03:00	51.0	8.8	-9.2	North-West	0.00	Night
Nov-27-2024 05:00	50.1	7.7	-10.1	West	0.00	Night
Nov-28-2024 01:00	50.3	3.0	-13.4	South	0.00	Night
Nov-28-2024 02:00	51.1	6.1	-12.4	South	0.00	Night
Nov-28-2024 22:00	53.1	5.8	-15.3	South	0.00	Night
Nov-29-2024 00:00	51.3	5.8	-15.7	South	0.00	Night
Nov-29-2024 23:00	50.8	5.8	-17.8	South	0.00	Night
Nov-30-2024 00:00	54.4	5.8	-16.5	South	0.00	Night

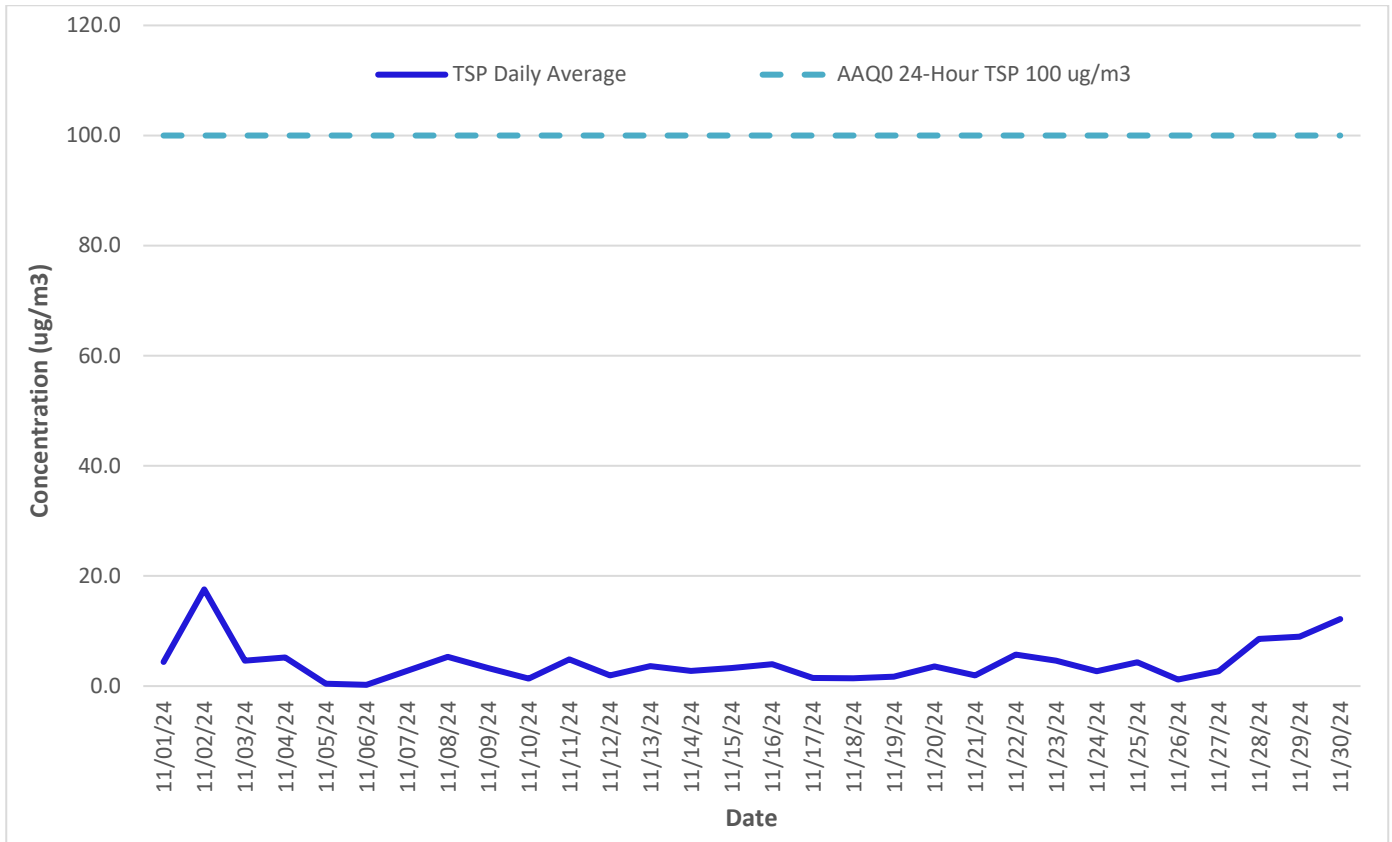
### 3.0 PARTICULATE RESULTS

As per development permit the air quality threshold values of particulate matter for this site are of 100 µg/m<sup>3</sup> for TSP Daily, 29 µg/m<sup>3</sup> for the PM2.5 Daily and 80 µg/m<sup>3</sup> for the PM2.5 Hourly. As shown in Table 3, there were no exceedances.

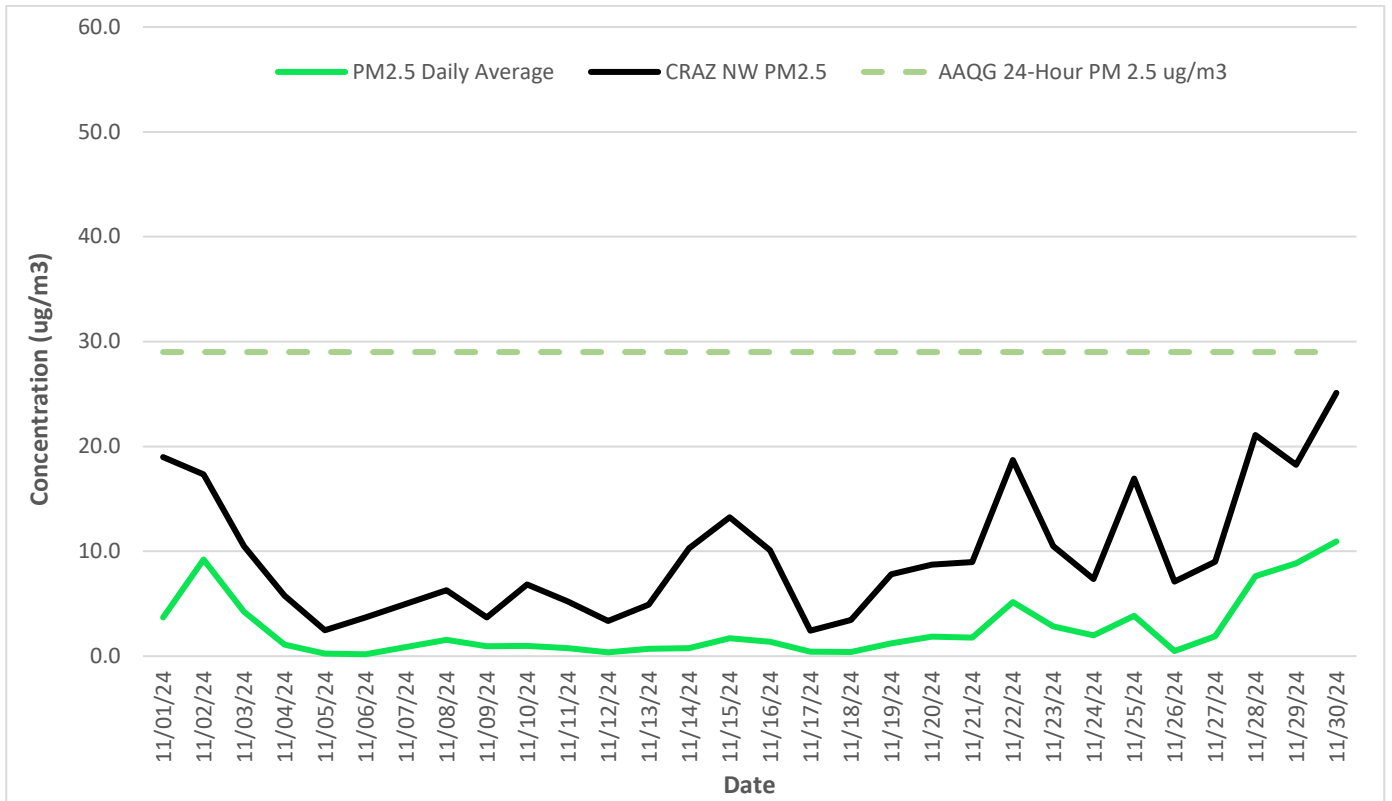
**Table 3. STAR PIT – November 2024 – Particulate Results**

Date	TSP Daily Average	PM2.5 Daily Average	CRAZ NW PM2.5	PM2.5 Hourly Max
Tuesday 01-Oct-24	4.4	3.7	19.0	4.9
Wednesday 02-Oct-24	17.6	9.2	17.3	15.8
Thursday 03-Oct-24	4.6	4.3	10.5	12.5
Friday 04-Oct-24	5.2	1.1	5.8	3.6
Saturday 05-Oct-24	0.4	0.3	2.5	0.4
Sunday 06-Oct-24	0.2	0.2	3.7	0.2
Monday 07-Oct-24	High Wind			
Tuesday 08-Oct-24	5.3	1.5	6.3	3.7
Wednesday 09-Oct-24	3.3	0.9	3.7	1.9
Thursday 10-Oct-24	1.4	1.0	6.8	1.7
Friday 11-Oct-24	4.9	0.8	5.2	3.0
Saturday 12-Oct-24	1.9	0.4	3.3	0.8
Sunday 13-Oct-24	3.6	0.7	4.9	1.6
Monday 14-Oct-24	2.8	0.8	10.3	1.3
Tuesday 15-Oct-24	3.3	1.7	13.3	3.2
Wednesday 16-Oct-24	4.0	1.4	10.1	3.1
Thursday 17-Oct-24	1.5	0.4	2.4	0.6
Friday 18-Oct-24	1.4	0.4	3.4	0.7
Saturday 19-Oct-24	1.7	1.2	7.8	3.2
Sunday 20-Oct-24	3.6	1.9	8.7	2.9
Monday 21-Oct-24	2.0	1.8	9.0	3.6
Tuesday 22-Oct-24	5.7	5.2	18.7	8.4
Wednesday 23-Oct-24	4.6	2.8	10.5	5.1
Thursday 24-Oct-24	2.7	2.0	7.4	3.6
Friday 25-Oct-24	4.3	3.8	16.9	4.1
Saturday 26-Oct-24	1.2	0.5	7.1	1.1
Sunday 27-Oct-24	2.7	1.9	9.0	3.5
Monday 28-Oct-24	8.5	7.6	21.1	13.1
Tuesday 29-Oct-24	9.0	8.8	18.2	10.6
Wednesday 30-Oct-24	12.2	10.9	25.1	16.3
Thursday 31-Oct-24	4.1	4.0	19.0	5.0
Monthly Average	4.3	2.7	10.2	4.6

Figure 3 & Figure 4 illustrate the values in Table 3 and compares the TSP & PM 2.5 values to the AAAQO & AAAQG criteria, respectively.



**Figure 3. STAR PIT – November 2024 – TSP Daily Particulate Monitoring Results**



**Figure 4. STAR PIT – November 2024 – PM 2.5 Daily Particulate Monitoring Results**



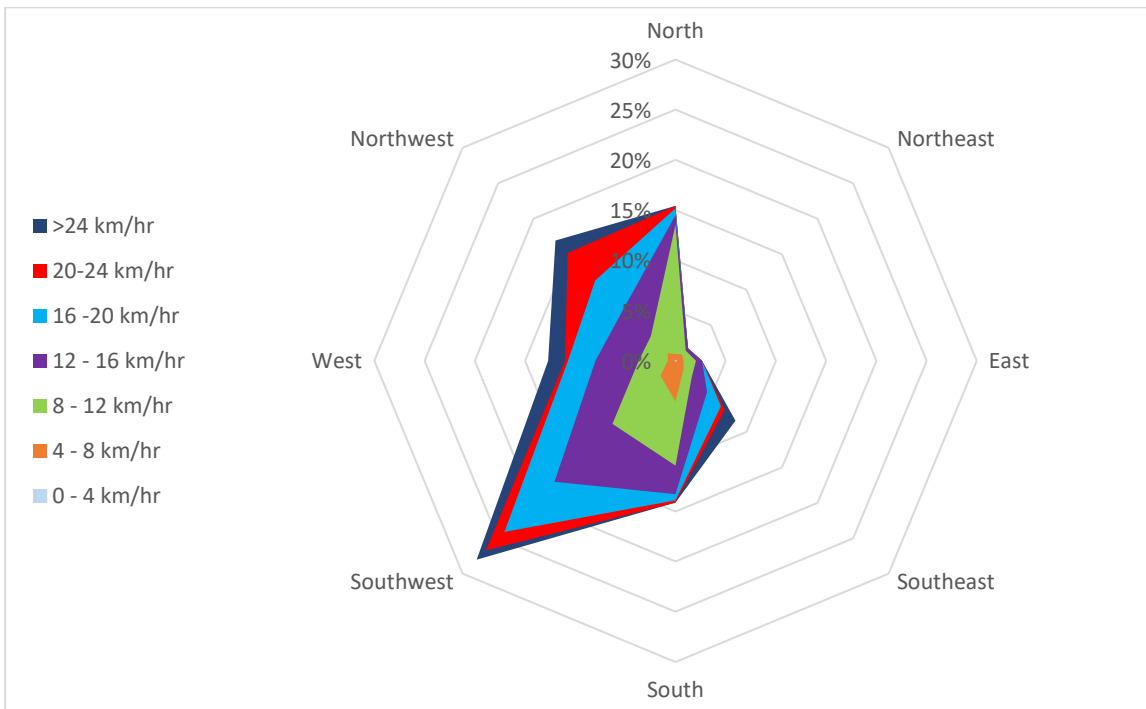
## 4.0 METEOROLOGICAL DATA

### 4.1 TRAILER

As indicated in Table 4 & Figure 5, the primary wind direction for November 2024 was generally from the southwest. The monthly values for the temperature and precipitation can be found in Table 5.

**Table 4. STAR PIT Trailer – November 2024 – Wind Data Results**

Count of Direction	Column Labels								Grand Total
Row Labels	East	North	Northeast	Northwest	South	Southeast	Southwest	West	Grand Total
0-4	0.12%	0.07%	0.12%	0.20%	0.04%	0.15%	0.11%	0.09%	0.89%
4-8	0.67%	0.59%	0.78%	0.88%	4.00%	0.98%	2.01%	0.68%	10.60%
8-12	1.24%	12.86%	0.54%	2.40%	6.40%	1.14%	6.77%	2.89%	34.26%
12-16	0.60%	0.97%	0.30%	3.85%	2.84%	2.16%	8.16%	4.32%	23.21%
16-20	0.00%	0.69%	0.00%	3.99%	0.61%	1.95%	7.07%	2.74%	17.06%
20-24	0.00%	0.24%	0.00%	3.86%	0.24%	0.53%	2.59%	0.28%	7.75%
>24	0.00%	0.00%	0.00%	1.74%	0.00%	1.51%	1.31%	1.68%	6.24%
<b>Grand Total</b>	<b>2.64%</b>	<b>15.43%</b>	<b>1.75%</b>	<b>16.92%</b>	<b>14.14%</b>	<b>8.44%</b>	<b>28.01%</b>	<b>12.68%</b>	<b>100.00%</b>



**Figure 5. STAR PIT Trailer – November 2024 - Wind Rose**

**Table 5. STAR PIT Trailer – November 2024 – Wind Data Results**

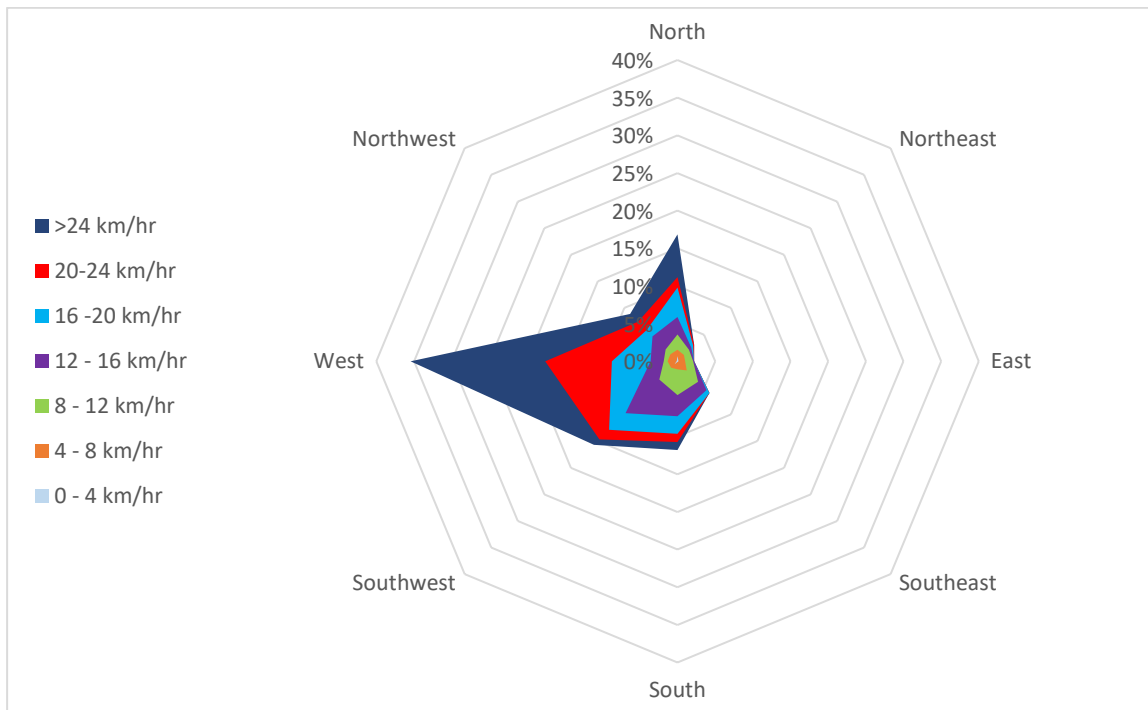
Parameter	Monthly Average	1-Hour	
		Maximum	Minimum
Temperature (°C)	-3.6	15.9	-19.6
Precipitation (mm)	0.0	0.3	0.0
Total Monthly Precipitation (mm)		0.8	

## 4.2 OFFICE

As indicated in Table 6 & Figure 6, the primary wind direction for November 2024 was from the west with high windspeeds (between 8 and +24 km/hr). The monthly values for the temperature and precipitation can be found in Table 7.

**Table 6. STAR PIT Office – November 2024 – Wind Data Results**

Count of Direction	Column Labels								Grand Total
Row Labels	East	North	Northeast	Northwest	South	Southeast	Southwest	West	Grand Total
0-4	0.08%	0.68%	0.14%	0.10%	0.10%	0.15%	0.56%	0.12%	1.93%
4-8	0.94%	0.85%	1.03%	1.23%	0.95%	1.57%	0.66%	1.20%	8.43%
8-12	1.07%	2.03%	1.01%	0.88%	3.43%	2.13%	2.20%	0.50%	13.25%
12-16	0.12%	2.32%	0.40%	2.47%	2.81%	1.59%	6.34%	1.77%	17.82%
16-20	0.00%	3.91%	0.34%	1.14%	2.33%	0.55%	3.09%	5.13%	16.50%
20-24	0.00%	1.39%	0.20%	1.60%	1.09%	0.00%	1.80%	8.85%	14.94%
>24	0.00%	5.68%	0.00%	1.47%	1.06%	0.00%	1.06%	17.88%	27.15%
<b>Grand Total</b>	<b>2.21%</b>	<b>16.85%</b>	<b>3.12%</b>	<b>8.88%</b>	<b>11.79%</b>	<b>5.98%</b>	<b>15.71%</b>	<b>35.45%</b>	<b>100.00%</b>



**Figure 6. STAR PIT Office – November 2024 - Wind Rose**

**Table 7. STAR PIT Office – November 2024 – Wind Data Results**

Parameter	Monthly Average	1-Hour	
		Maximum	Minimum
Temperature (°C)	-3.4	15.7	-19.5
Precipitation (mm)	0.0	0.1	0.0
Total Monthly Precipitation (mm)		0.3	

## 5.0 CALIBRATION RECORDS

### Record of Calibration Results

Description	Location	Date	Time	Pre / Post	Calibration Level	Calibrator Model	Serial Number
Pre-Measurement Calibration	STAR PIT	July 4, 2024	10:50	Post	93.9 dBA	B&K 4231	2575493
Post-Measurement Calibration	STAR PIT	November 6, 2024	09:25	Pre	93.9 dBA	B&K 4231	2575493