

Ambient Air and Sound

Monthly Report

STONEY TRAIL AGGREGATE RESOURCE

BURNCO

LAFARGE



Volker Stevin
Contracting Ltd.

Heidelberg
Materials

June 2024

Glossary

- L_{eq}** - Equivalent Continuous Sound Pressure Level. The total sound energy logged over the course of a measurement. (Uses logarithmic averaging).
- L_{eq24}** - Measured over the entire 24-period (00:00 – 23:59)
- L_{eqDay}** - Measured over the daytime period (07:00 – 22:00)
- L_{eqNight}** - Measured over the nighttime period (22:00 – 07:00)
- SPL (dBA)** - Sound Pressure Level in dBA (A-weighted, which is corrected for human hearing)
- TSP** - Total Suspended Particulate Matter. Includes particulates with a diameter of greater than 10 micrometers and smaller.
- PM_{2.5}** - Particulate Matter with a diameter of 2.5 micrometers and smaller.

1.0 SOUND LEVEL MEASUREMENT RESULTS

The results of the sound monitoring at the STAR Pit can be found in Table 1. Table 1 provides the daily averaged L_{eq24} , L_{eqDay} and $L_{eqNight}$ sound levels in addition to the minimum and maximum L_{eq24} values.

Table 1. June 2024 – STAR PIT – Sound Monitoring Results¹

Day	Leq24	L _{eq} Min	L _{eq} Max	LeqDay	LeqNight
Saturday 01-Jun-24	41.7	28.6	44.8	42.4	38.3
Sunday 02-Jun-24	40.6	35.1	47.8	39.2	41.9
Monday 03-Jun-24	44.8	32.1	48.3	47.6	41.6
Tuesday 04-Jun-24	44.1	44.1	44.1	44.1	44.1
Wednesday 05-Jun-24	42.1	42.1	42.1	N/A	42.1
Thursday 06-Jun-24	50.0	44.1	53.4	50.7	49.4
Friday 07-Jun-24	50.9	43.0	54.3	51.5	43.6
Saturday 08-Jun-24	41.7	38.3	46.0	39.8	42.2
Sunday 09-Jun-24	39.7	38.9	41.4	N/A	39.7
Monday 10-Jun-24	51.5	42.2	56.4	52.9	45.2
Tuesday 11-Jun-24	48.6	39.2	53.9	52.4	46.0
Wednesday 12-Jun-24	49.0	47.9	49.8	49.7	48.7
Thursday 13-Jun-24	49.9	49.4	52.4	50.7	49.4
Friday 14-Jun-24	N/A	44.5	53.4	49.3	48.8
Saturday 15-Jun-24	43.8	37.0	46.0	44.5	42.1
Sunday 16-Jun-24	39.5	34.9	41.0	40.4	36.5
Monday 17-Jun-24	51.6	33.5	56.0	52.6	49.0
Tuesday 18-Jun-24	52.2	45.2	55.8	52.3	51.8
Wednesday 19-Jun-24	50.2	40.8	54.2	50.5	49.6
Thursday 20-Jun-24	50.5	44.8	55.3	48.7	51.9
Friday 21-Jun-24	49.5	43.8	51.6	50.1	49.1
Saturday 22-Jun-24	43.1	41.0	44.2	42.8	43.7
Sunday 23-Jun-24	45.2	33.8	52.1	46.8	43.4
Monday 24-Jun-24	44.4	35.4	49.1	43.0	44.6
Tuesday 25-Jun-24	47.6	42.0	51.0	46.5	48.6
Wednesday 26-Jun-24	51.3	48.4	53.9	53.9	49.0
Thursday 27-Jun-24	52.5	44.8	55.6	51.6	52.6
Friday 28-Jun-24	49.7	44.2	55.3	51.1	45.7
Saturday 29-Jun-24	45.4	43.3	48.0	45.7	45.2
Sunday 30-Jun-24	40.8	37.5	43.6	41.9	38.3
Monthly Average	46.6	40.7	50.0	47.6	45.4
Monthly Maximum	52.5	49.4	56.4	53.9	52.6
Monthly Minimum	39.5	28.6	41.0	39.2	36.5

¹ It should be noted that all measured sound levels provided in Table 1 are for instances in which the wind speeds were below 11 km/hr and rainfall was below 3mm/hr, as both conditions will impact the validity of the measured results. As such, it is possible that there will time periods/days in which there is no valid data.

Figure 1 provides the graphical representation of the results found in Table 1. Figure 2 illustrates the hourly average, maximum and minimum L_{eq} dBA values for the entire month. In addition, the City of Calgary’s Community Standards Bylaw values have been included.

Lastly, it is important to note that the monitoring stations are located inside the perimeter berms, adjacent to operations and not beyond the site boundaries. Measurements are intended to help monitor and measure the internal operations performance and are not representative of the lower offsite levels.

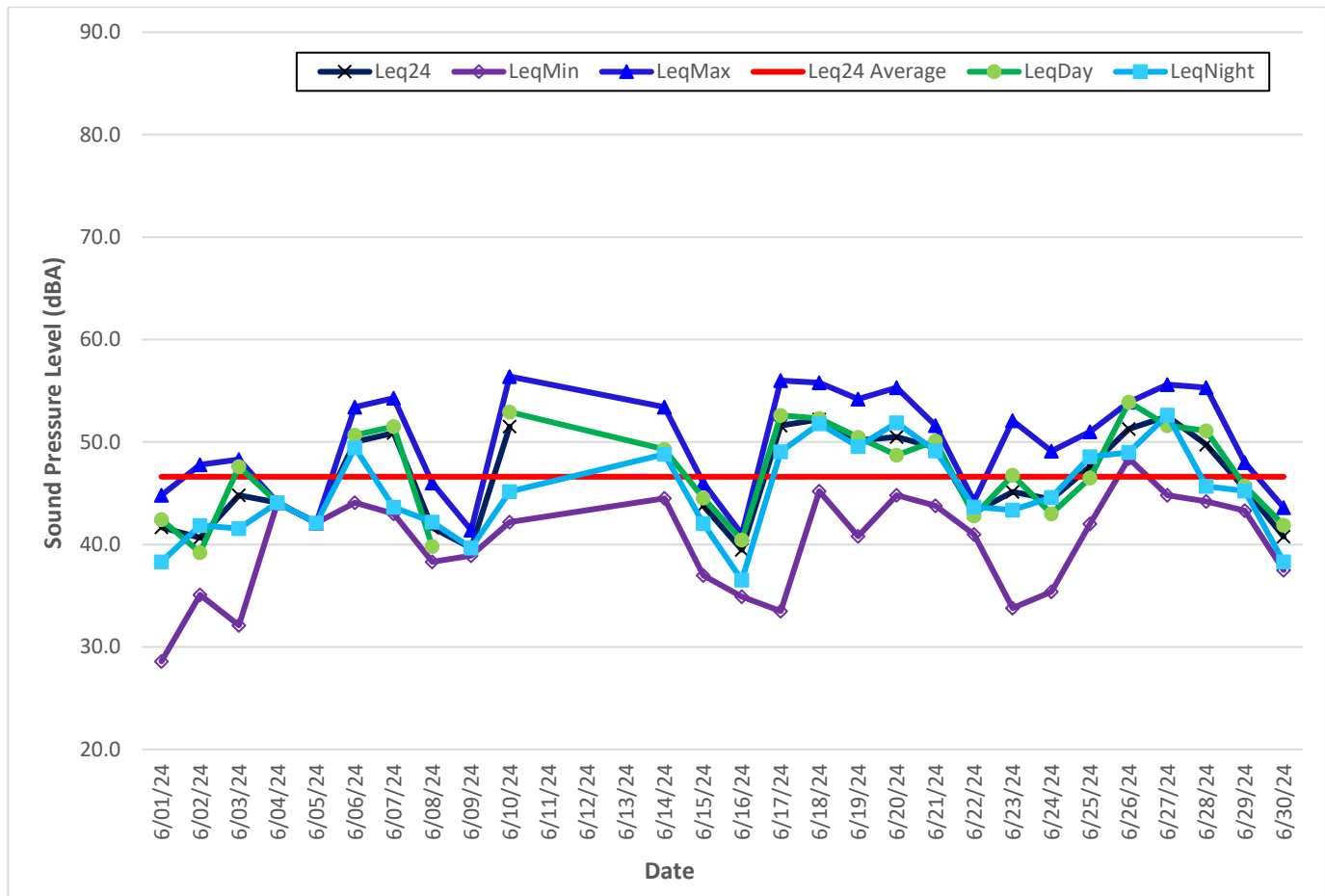


Figure 1. STAR PIT – June 2024 – Daily Sound Monitoring Results²

² Values of 30 were given to dates in which there was no data. This was to allow for the creation of the graph. The values within Table 1 are correctly calculated ignoring the dates of no data (due to wind or rain).

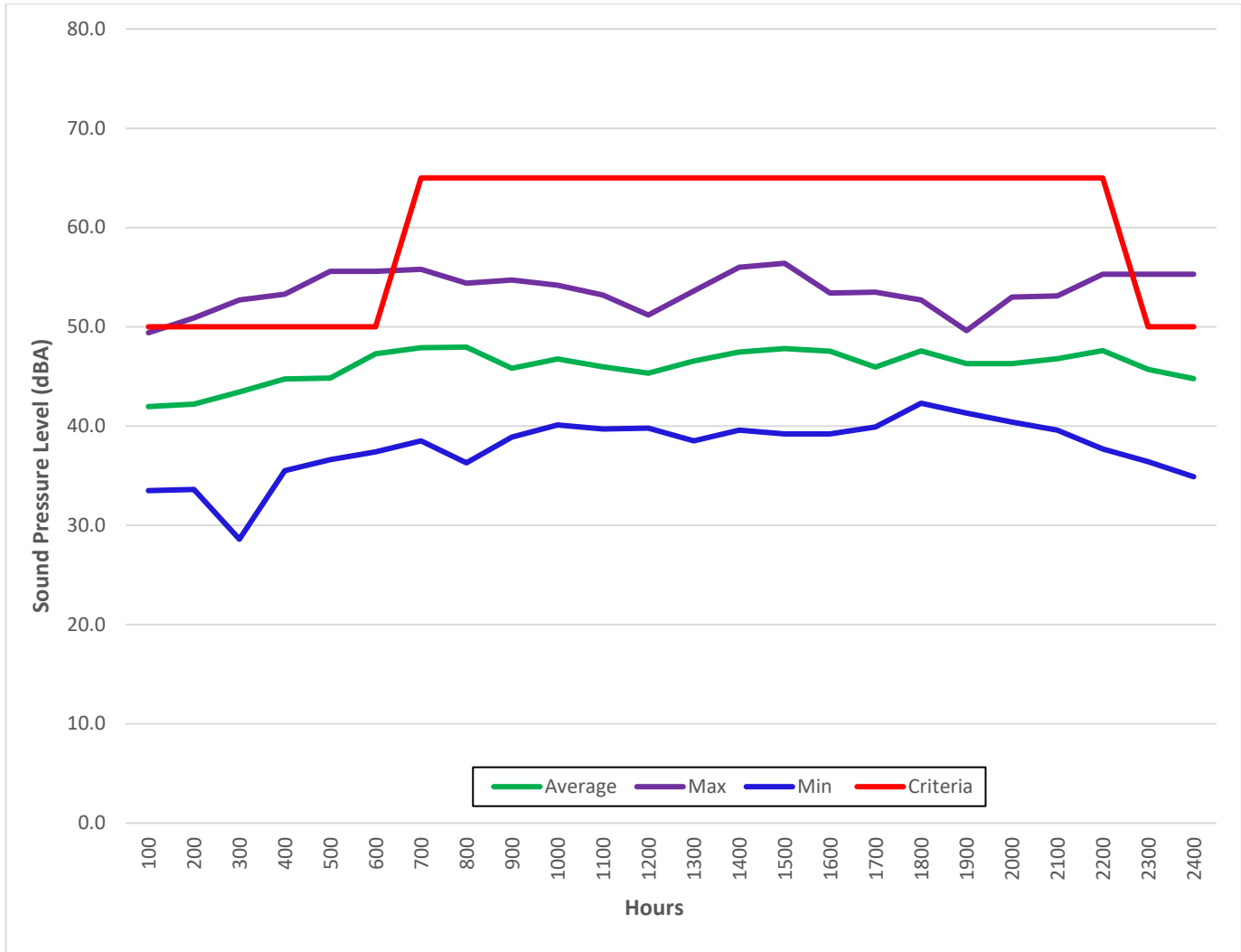


Figure 2. STAR PIT – June 2024 – Hourly Sound Monitoring Summary

2.0 SOUND LEVEL EXCEEDANCES

As per the development permit, the permissible sound level for this site is 50 dBA L_{eq} -1Hour for the nighttime and 65 dBA L_{eq} -1Hour for the daytime hours. As shown in Table 2, from June 1 to June 30, 2024, there were 20 exceedances. All exceedances occurred during the nighttime and a majority occurred when there wouldn't be activities at the site (between 22:00 – 04:00).

Table 2. STAR PIT – June 2024 – Sound Level Exceedances

Date	L_{eq} -1-hour (dBA)	Wind Speed (Km/hr)	Temperature (°C)	Wind Direction	Hourly Rainfall (mm)	Day/Night
Jun-06-2024 04:00	50.2	10.3	7.5	West	0.00	Night
Jun-06-2024 23:00	53.0	8.8	11.5	North-West	0.00	Night
Jun-07-2024 00:00	52.2	10.0	10.3	North-West	0.00	Night
Jun-19-2024 06:00	52.3	7.9	3.9	West	0.00	Night
Jun-19-2024 23:00	51.8	8.5	10.0	South	0.00	Night
Jun-20-2024 00:00	51.7	9.7	9.9	South	0.00	Night
Jun-20-2024 02:00	50.9	9.7	8.7	South	0.00	Night
Jun-20-2024 03:00	51.4	9.2	8.5	South	0.00	Night
Jun-20-2024 05:00	50.6	5.7	6.9	West	0.00	Night
Jun-20-2024 06:00	51.3	5.3	7.3	West	0.00	Night
Jun-20-2024 23:00	55.3	8.3	10.9	North	0.00	Night
Jun-21-2024 00:00	55.3	6.4	10.1	North	0.00	Night
Jun-21-2024 06:00	51.6	4.5	8.3	South	0.00	Night
Jun-22-2024 00:00	51.1	8.1	11.8	South	0.00	Night
Jun-23-2024 06:00	50.2	8.8	16.8	North	0.00	Night
Jun-25-2024 05:00	51.0	7.6	8.7	North-West	0.00	Night
Jun-27-2024 03:00	52.7	4.7	12.0	South-West	0.00	Night
Jun-27-2024 04:00	53.3	3.8	11.6	North	0.00	Night
Jun-27-2024 05:00	55.6	4.3	11.5	North-West	0.00	Night
Jun-27-2024 06:00	55.6	8.5	10.8	West	0.00	Night

3.0 PARTICULATE RESULTS

As per development permit the air quality threshold values of particulate matter for this site are of 100 µg/m³ for TSP Daily, 29 µg/m³ for the PM2.5 Daily and 80 µg/m³ for the PM2.5 Hourly. As shown in Table 3, there were no exceedances in June 2024.

Table 3. STAR PIT – June 2024 – Particulate Results

Date	TSP Daily Average	PM2.5 Daily Average	CRAZ NW PM2.5	PM2.5 Hourly Max
Saturday 01-Jun-24	0.6	0.5	3.5	0.8
Sunday 02-Jun-24	0.6	0.4	3.0	1.0
Monday 03-Jun-24	2.1	0.3	2.7	0.4
Tuesday 04-Jun-24	7.5	0.4	1.4	0.4
Wednesday 05-Jun-24	2.3	0.2	1.6	0.2
Thursday 06-Jun-24	1.6	1.4	4.2	4.0
Friday 07-Jun-24	3.5	1.7	4.1	5.7
Saturday 08-Jun-24	4.1	0.7	4.4	1.1
Sunday 09-Jun-24	3.5	0.6	3.1	0.8
Monday 10-Jun-24	2.2	1.5	4.8	4.3
Tuesday 11-Jun-24	3.6	1.6	5.5	7.2
Wednesday 12-Jun-24	6.3	0.5	2.6	0.9
Thursday 13-Jun-24	11.4	0.9	3.2	2.2
Friday 14-Jun-24	9.2	1.9	5.9	3.4
Saturday 15-Jun-24	12.5	0.7	3.7	1.5
Sunday 16-Jun-24	1.4	0.5	3.8	0.5
Monday 17-Jun-24	3.7	0.7	3.9	2.0
Tuesday 18-Jun-24	15.1	0.9	4.3	1.3
Wednesday 19-Jun-24	3.7	1.1	5.2	2.0
Thursday 20-Jun-24	6.7	1.1	5.0	3.0
Friday 21-Jun-24	0.9	2.9	5.4	18.7
Saturday 22-Jun-24	4.5	1.2	5.5	2.0
Sunday 23-Jun-24	2.5	1.4	7.9	5.9
Monday 24-Jun-24	4.0	0.3	3.1	0.4
Tuesday 25-Jun-24	6.1	0.7	3.7	1.6
Wednesday 26-Jun-24	3.3	1.2	4.1	1.6
Thursday 27-Jun-24	5.0	1.4	6.1	2.4
Friday 28-Jun-24	2.6	1.2	7.8	1.6
Saturday 29-Jun-24	3.3	1.6	10.6	2.0
Sunday 30-Jun-24	14.1	0.8		2.5
Monthly Average	4.9	1.0	4.5	2.7

Figure 3 & Figure 4 illustrate the values in Table 3 and compares the TSP & PM 2.5 values to the AAAQO & AAAQG criteria, respectively.

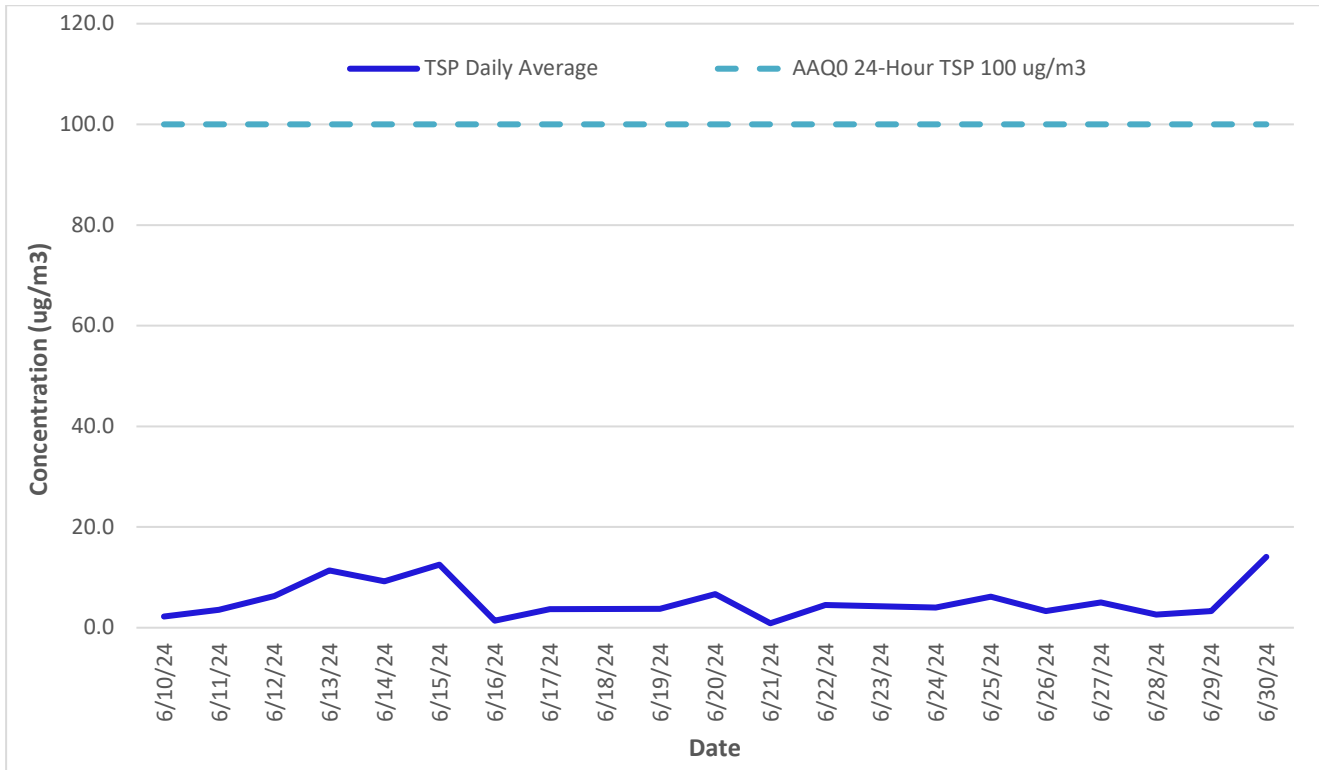


Figure 3. STAR PIT – June 2024 – TSP Daily Particulate Monitoring Results

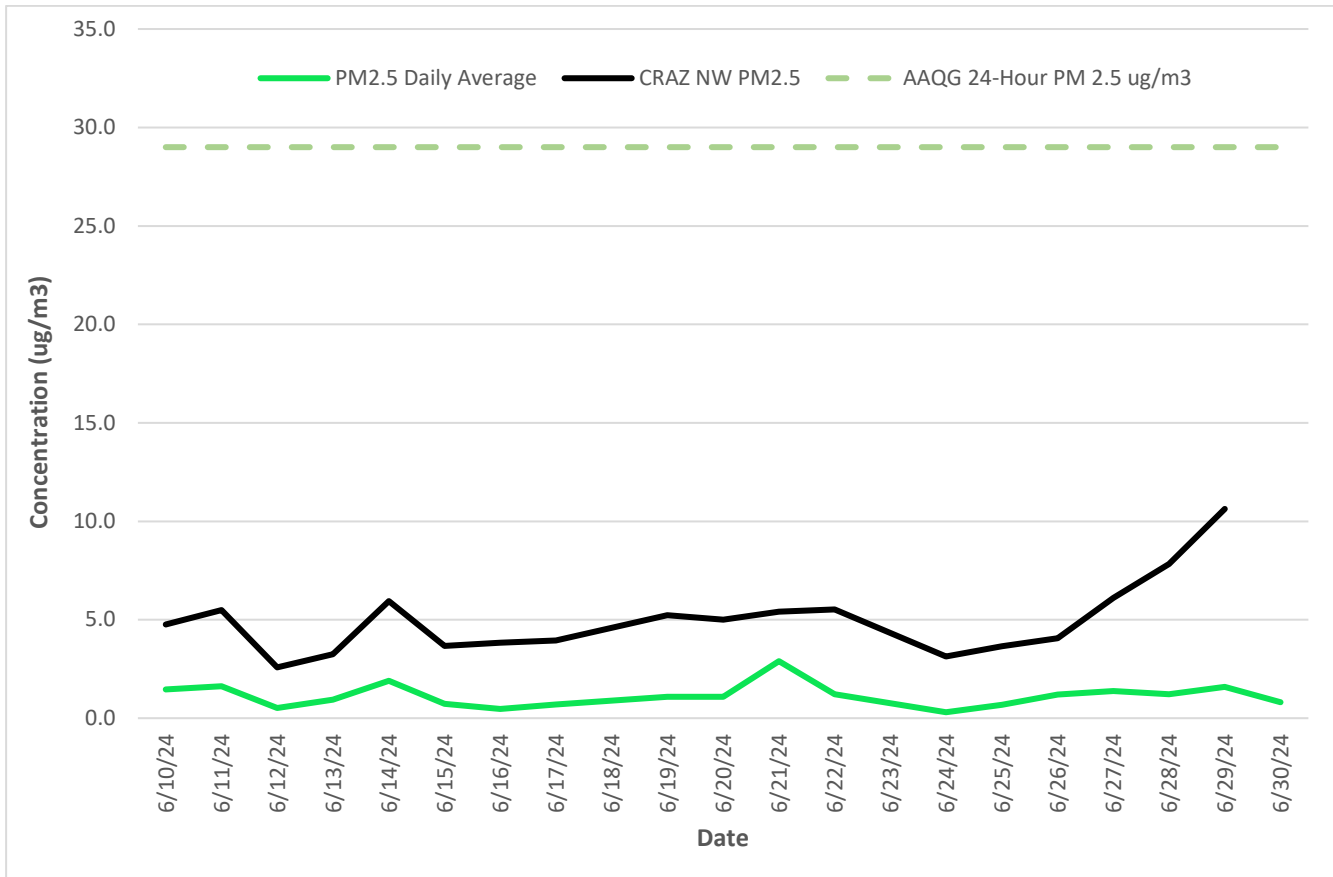


Figure 4. STAR PIT – June 2024 – PM 2.5 Daily Particulate Monitoring Results

4.0 METEOROLOGICAL DATA

4.1 TRAILER

As indicated in Table 4 & Figure 5, the primary wind direction for June 2024 was from the west and northwest with moderate to high windspeeds (between 4 – 20 km/hr). The monthly values for the temperature and precipitation can be found in Table 5.

Table 4. STAR PIT Trailer – June 2024 – Wind Data Results

Count of Direction	Column Labels								Grand Total
Row Labels	East	North	Northeast	Northwest	South	Southeast	Southwest	West	Grand Total
0-4	0.00%	0.14%	0.14%	0.28%	0.28%	0.14%	0.42%	0.28%	1.67%
4-8	0.14%	1.67%	1.11%	1.53%	3.76%	1.95%	3.34%	3.62%	17.11%
8-12	0.56%	3.76%	0.83%	4.59%	4.45%	2.09%	7.23%	8.76%	32.27%
12-16	1.11%	2.09%	0.42%	2.78%	1.25%	3.20%	2.78%	4.59%	18.22%
16-20	0.83%	0.97%	0.00%	2.64%	0.56%	4.17%	2.23%	4.03%	15.44%
20-24	0.00%	0.70%	0.00%	1.53%	0.14%	3.06%	1.39%	1.25%	8.07%
>24	0.00%	0.56%	0.00%	0.56%	0.00%	4.45%	1.11%	0.56%	7.23%
Grand Total	2.64%	9.87%	2.50%	13.91%	10.43%	19.05%	18.50%	23.09%	100.00%

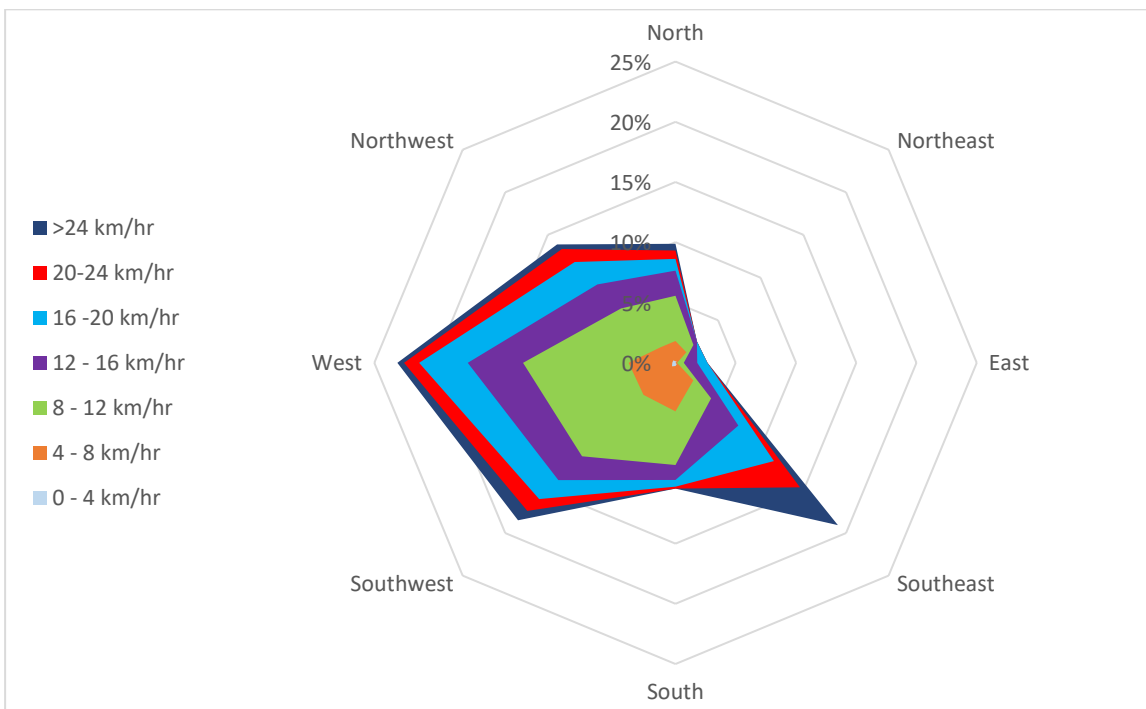


Figure 5. STAR PIT Trailer – June 2024 - Wind Rose

Table 5. STAR PIT Trailer – June 2024 – Wind Data Results

Parameter	Monthly Average	1-Hour	
		Maximum	Minimum
Temperature (°C)	12.1	24.0	2.0
Precipitation (mm)	0.2	11.2	0.0
Total Monthly Precipitation (mm)		117.7	

4.2 OFFICE

As indicated in Table 6 & Figure 6, the primary wind direction for June 2024 was from the west and northwest with moderate to high windspeeds (between 4 and +20 km/hr). The monthly values for the temperature and precipitation can be found in Table 7.

Table 6. STAR PIT Office – June 2024 – Wind Data Results

Count of Direction	Column Labels								Grand Total
Row Labels	East	North	Northeast	Northwest	South	Southeast	Southwest	West	Grand Total
0-4	0.56%	0.00%	0.00%	0.28%	0.14%	0.00%	0.42%	0.42%	1.81%
4-8	0.56%	1.11%	0.69%	2.36%	3.06%	0.42%	3.47%	2.78%	14.44%
8-12	0.42%	3.19%	1.39%	3.47%	3.89%	1.25%	2.64%	2.36%	18.61%
12-16	1.11%	3.33%	1.25%	3.06%	3.33%	2.22%	2.22%	3.89%	20.42%
16-20	0.14%	1.39%	0.42%	2.50%	1.94%	2.36%	0.42%	5.56%	14.72%
20-24	0.00%	1.25%	0.00%	1.25%	3.89%	0.56%	0.28%	3.61%	10.83%
>24	0.00%	3.33%	0.00%	3.06%	2.22%	0.69%	0.14%	9.72%	19.17%
Grand Total	2.78%	13.61%	3.75%	15.97%	18.47%	7.50%	9.58%	28.33%	100.00%

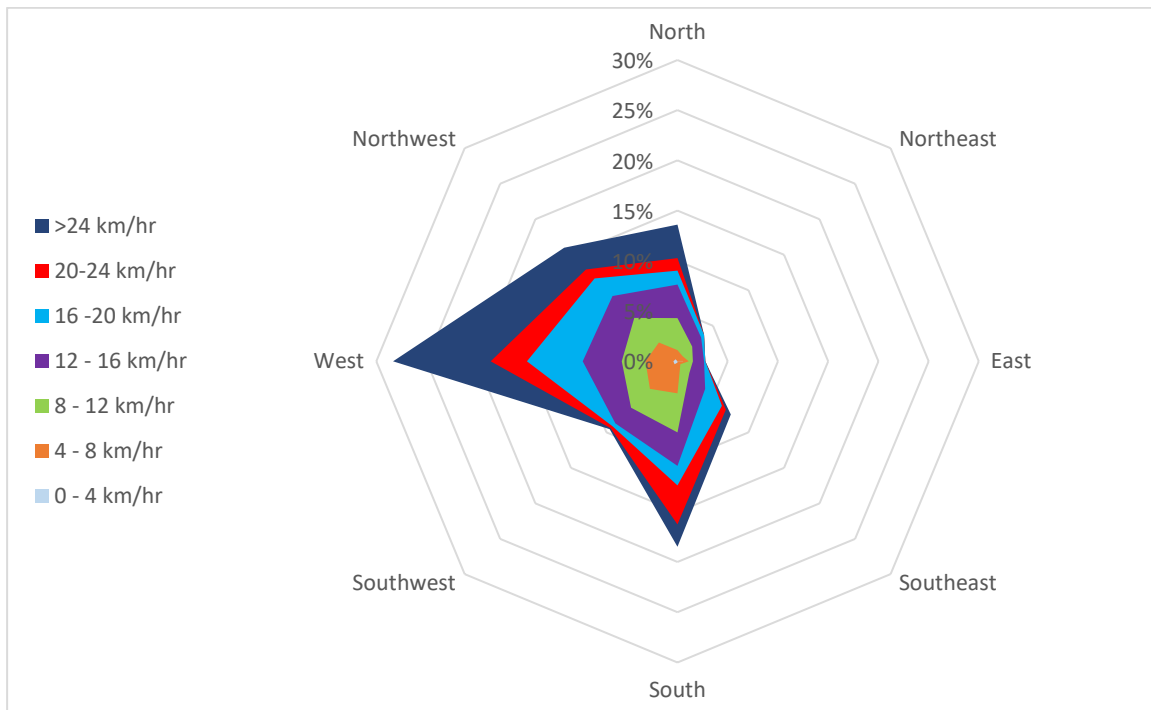


Figure 6. STAR PIT Office – June 2024 - Wind Rose

Table 7. STAR PIT Office – June 2024 – Wind Data Results

Parameter	Monthly Average	1-Hour	
		Maximum	Minimum
Temperature (°C)	12.3	23.7	2.4
Precipitation (mm)	0.1	6.8	0.0
Total Monthly Precipitation (mm)		97.4	

5.0 CALIBRATION RECORDS

Record of Calibration Results

Description	Location	Date	Time	Pre / Post	Calibration Level	Calibrator Model	Serial Number
Pre-Measurement Calibration	STAR PIT	May 9, 2024	11:00	Post	93.9 dBA	B&K 4231	2575493
Post-Measurement Calibration	STAR PIT	July 4, 2024	10:50	Pre	93.8 dBA	B&K 4231	2575493